

CUESCREENS SRX Screen Install Guide

Models supported: All 2013-2017 SRX

Estimated time to remove: 10 minutes

Tools needed:

CUESCREENS Install Tool Kit- Micro ESD pliers and Nylon Pry Bar- Available at:

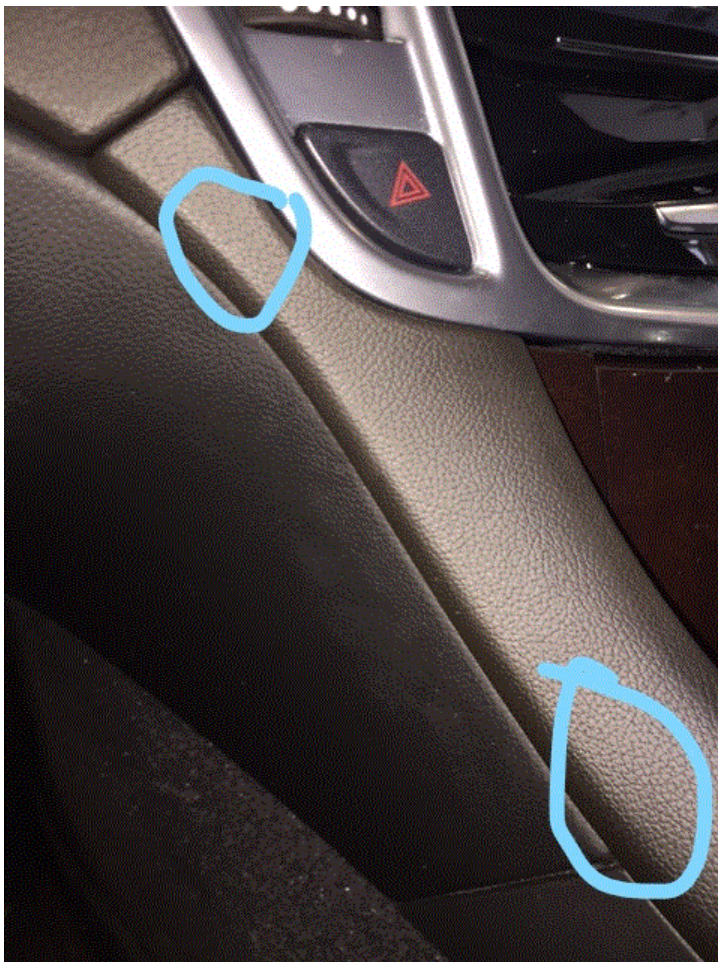
https://www.amazon.com/dp/B07QYPBCZY?ref=myi_title_dp

CUESCREENS Replacement screen- Available at:

https://www.amazon.com/dp/B07FCR1NQ1?ref=myi_title_dp

Procedure:

1. Using a Nylon pry bar to pry the upper part of the side L shaped trim, then pry the middle part. Pull the trim away from cue unit and towards the outside of the vehicle. You do not have to remove the lower piece of the trim that goes along the shifter console.



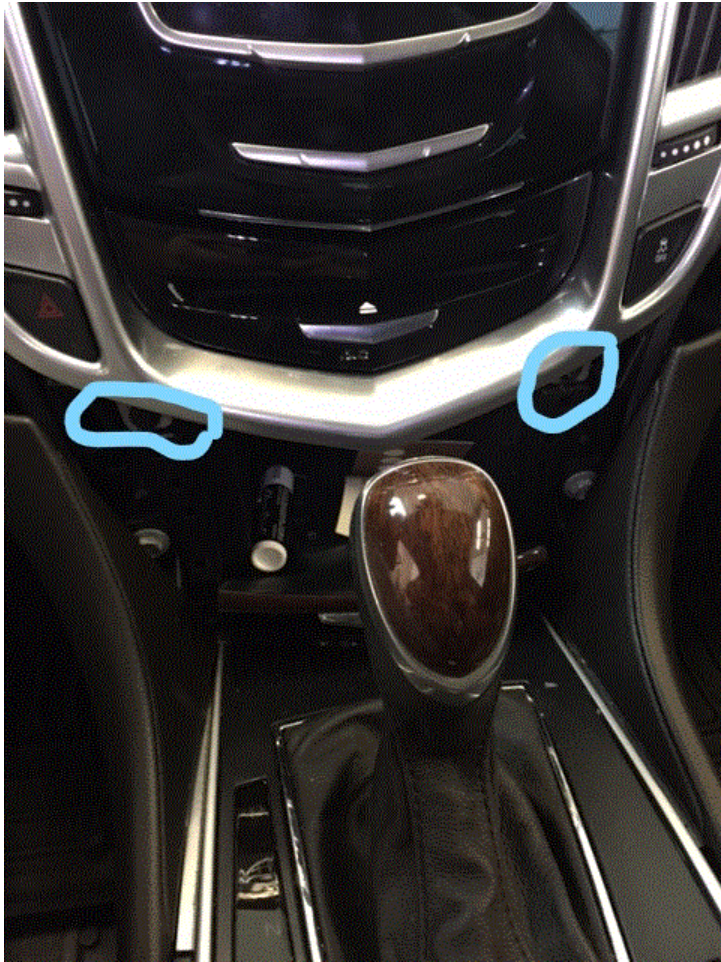
1, Continued. Remove side pieces as shown by prying upper trim pieces away from center console



2. Pry the upper portion of the U shaped (wood grained) trim the surrounds the lower storage unit. Pry the top and middle of each arm in the U then pull the piece upward.



3. Remove the two 7mm screws that were behind the U.



4. Pry the trim piece that is directly above the touch screen straight towards the back of the vehicle. Pry one side, center then other side.



5. Starting from the bottom gently pry the large silver vent, control, trim piece that surrounds the touch screen.
6. Remove the connector that connects to the large silver piece by pulling up on the top and bottom retaining clips that hold it in.
7. Remove the 4 7mm bolts holding the CUE unit in.
8. Remove the three connectors from the back of the CUE unit.
9. Continue to the Screen Swap videos shown at <https://www.youtube.com/watch?v=KkFHbJGvxGs&feature=youtu.be>